





# 2023 ANNUAL REPORT



[www.SCWC.org](http://www.SCWC.org)



An independent 501 (c)3 non-profit  
providing skilled and compassionate emergency treatment  
and long-term rehabilitative care  
to thousands of injured, ill, and orphaned wild animals annually  
– with the goal of releasing healthy animals back “home” in the wild –  
and educating the public about the importance of  
helping and protecting wildlife



# BOARD CHAIRPERSON'S LETTER

For Second Chance Wildlife Center, Inc. (SCWC), 2023 was a year of great progress and promise for the future. SCWC successfully advanced its mission to provide compassionate emergency and rehabilitative care for wildlife patients on a virtually 24/7 basis. During the year, **SCWC admitted 2,709 wildlife patients** - a significant increase over the 2022 level of 2,282 patients, with each receiving expert care and resulting in the need to purchase additional supplies, such as medications and species-specific food.

We are especially proud of **staff leadership which managed the increased number of patients with skilled care and by optimizing scheduling efficiency and available funds, promoting strong morale during long shifts, and achieving a 100% clinic staff retention rate over the prior year.**

The year also brought **the first full 12 months of having a full-time wildlife veterinarian on staff**, which was an important benefit for our patients as it permitted reduced wait time for needed surgery and other procedures to ease suffering and to aid patient recovery. It also permitted our staff to receive expanded hands-on training from an expert wildlife vet.

In 2023, **SCWC officially broke ground and began construction of our new facility in Clarksburg, MD, which will have a much larger clinic building as well as increased capacity for recovering animals in outdoor enclosures and flight cages.** Benefitting from staff management working in tandem with the Board of Directors on fiduciary and construction matters, we are working toward completion in late 2024. The new facility has been fully funded by generous private donations, without loans or government assistance. **We are grateful to all who have supported SCWC in its work to care for and heal our precious wildlife neighbors.**

With gratitude,  
Kenneth R. Button





# BOARD OF DIRECTORS

Each member of our all-volunteer Board of Directors is passionate about protecting and healing wildlife and 100% committed to their fiduciary responsibilities in guiding SCWC. Additionally, each brings unique life experience and expertise to support the needs of our special organization.

## **Kenneth Button, MBA, Ph.D. - Chair**

Relevant Expertise: Economist, Business Valuation, Executive Leadership

## **Janice Hazlehurst - Vice Chair**

Relevant Expertise: Project Management, Budget Management, Volunteering for Animal-Centric Non-Profits

## **Jane Acri, Ph.D - Secretary**

Relevant Expertise: Neuroscience Research, Science Education

## **Carol Barnard, CPA, CFE, MBA - Treasurer**

Relevant Expertise: Non-Profit Financial Management & Accounting, Certified Fraud Examiner

## **Mariana Acevedo, Esq.**

Relevant Expertise: Law / Trial Attorney

## **Harriett Crosby**

Relevant Expertise: Environmental Policy & Legislation, Owner: Organic Farm & Learning Center

## **Susan McCurdy, CMCA, PCAM**

Relevant Expertise: Business Leadership, Entrepreneur, Community Engagement

## **Barry Meil**

Relevant Expertise: Entrepreneur, Non-Profit Leadership, Business Development

## **Charles "Chuck" Szollosy, PE, LEED AP, CEM, GBE**

Relevant Expertise: Mechanical, Electrical, Plumbing & Fire Protection Engineering, Small Business Leadership

## **Lucas Webster, Esq.**

Relevant Expertise: Construction Law / Attorney



*Board member & staff representative at Rockville Science Day*



*Board member assisting with baby squirrel feedings*



*Board members & staff leaders break ground on new SCWC Facility*



*Board member educating people on the importance of trees for people & wildlife*



# FAST FACTS

- **Founded in 1995.** SCWC will celebrate 30 years in 2025.
- **Admits over 2,500 patients (110+ species) annually.**
- **Small Clinic Staff of 9** includes Clinic Director, Wildlife Veterinarian, Clinic Techs and Telephone Hotline/Patient Admissions staff working in shifts over **7 days a week, 365 days a year, including holidays.**
- **Volunteers and college interns** assist with housekeeping, meal prep, patient weight checks, medical chart updates, some feedings and some releases.
- **On-site surgery room, X-ray machine, blood analysis kits, microscopes, cold laser machine, and more.**
- **SCWC never charges individuals for services.**
- **Average expense per patient: \$239 in 2023.**
- Works with **Federal, state & local health agencies** to identify and track animal diseases that could infect humans.





# WHY REHABILITATE?

- Since 1970, **50% of the World's wildlife species populations have disappeared.\***
- **Commercial and residential development continue to expand** - destroying habitat, displacing wildlife, and increasing negative encounters with humans that often result in injury or death to the animals (collisions with automobiles & lawnmowers, nest destroyed by tree trimming and/or tree removal, window strikes, etc.).
- **Ecosystems are out of balance.**
- **Misunderstood animals are important to save, too:**
  - **Opossums** eat thousands of ticks (helping to prevent the spread of Lyme disease).
  - **Bats** consume pesky mosquitos.
  - **Vultures** prevent the spread of disease from roadside animal carcasses and other waste/trash.
  - **Snakes** are a natural form of rodent control.
  - **Snapping Turtles** keep waters healthy by consuming dead fish and other decaying material.
- **Every healthy native and migratory animal we can return to the environment is a win for people and wildlife!**





# EDUCATION: A KEY PART OF OUR MISSION

- **We respond to ~8,000 telephone calls and emails annually** seeking our expert advice on animal rescue situations, animal behavior, and more.
- Our **social media platforms, brochures, videos, email blasts, newsletters, and website** provide important information about safely co-existing with wildlife, simple tips people can do at home to avoid injuring wildlife, and more. Our Facebook page, alone, reaches over 32,000 people.
- **Staff & Board members participate in presentations** to community organizations, schools, businesses, at science fairs, and more.
- **SCWC's College Internship Program** provides hands-on experience and expert mentorship to students considering careers in wildlife rehabilitation, biology, veterinary medicine, environmental science, etc.
- SCWC's President serves on the **Montgomery County, Maryland Animal Services Advisory Board** and its **Public Education Subcommittee**.
- **We educate through the media.** SCWC and its messaging have been featured on/in: WUSA-TV, WASH 97.1FM, Bethesda Magazine, Frederick Magazine, The Washington Post, and more.







# ACCREDITED AND REPUTABLE...

- **501(c)3 Charitable Organization** in “**Good Standing**” per Maryland's Secretary of State.
- **Candid/Guidestar Rating: Platinum (highest possible). Charity Navigator Rating: 3 out of 4 stars in 2023** (and we have taken specific steps in an effort to achieve 4 stars when Charity Navigator updates its ratings in mid to late 2024).
- “**Clean**” **3<sup>rd</sup> party Financial Audit reports past 5 years** (no management notes for items to rectify).
- Licensed to operate under **permits issued annually by the state of Maryland and U.S. Fish & Wildlife Service.**
- Fully Insured for **General Liability, Cyber Security, D&O, Employment Practices, and Workers Comp.**
- Board approved, and staff implemented, policies include: Non-discrimination, Document Retention, Whistleblowers and Non-retaliation, Conflict of Interest.

- **10 Person All-Volunteer Board of Directors:**

Backgrounds in Law, Science, Environmental Policy, Economics, Business Leadership, Engineering, Project Management, Non-Profit Accounting, Construction, Community Association Management, and more. All with a passion for saving wildlife and who take their Fiduciary Responsibilities very seriously.

File Annual Conflict of Interest Statements & Board Responsibility Acknowledgement documents.

Active Executive, Finance, Fundraising & Construction committees.



*continues...*



## ACCREDITED AND REPUTABLE...(cont'd).

- **Experienced Non-Profit/Business Leadership:**  
**Staff President, Maureen Smith** (serving SCWC Oct. 2018 – present):
  - Former President Jane Goodall Institute
  - Former Senior Executive: National Wildlife Federation
  - Former EVP/GM: Animal Planet TV
- **Clinic Director (Hannah Wilson) & Clinic Veterinarian (Dr. Kelsey Lance):** 20+ years combined wildlife care experience at licensed facilities in 8 states.
- **Clinic Staff:** Degrees include Biology, Wildlife Biology, Ecology, Environmental Science, and others. Prior roles at other animal care facilities (including the Smithsonian National Zoo), as an Animal Services officer, and volunteering or interning at SCWC and elsewhere.
- **Employee Handbook** and **Standard Operating Procedures Manual** updated and required reading annually.
- SCWC is a member of the **International Wildlife Rehabilitation Council, National Wildlife Rehabilitator's Association & Maryland Wildlife Rehabilitators Association.**
- **Recipient of State and County proclamations honoring SCWC** for providing outstanding service to the community (most recent in 2023).
- Member **Montgomery County Chamber of Commerce** and **Germantown-Gaithersburg Chamber of Commerce.**
- Formal partnership agreement with **Montgomery County Animal Services** to provide care for wildlife that the County doesn't have the resources to provide.







## ...AND BELOVED

*"Thank you for existing. Your care for – and support of – local wildlife is priceless." – D.F.*

*"Thank you for helping injured wild animals. I have appreciated being able to call you when needed." – J.B.*

*"Thanks for the good work you do. Those who help the helpless are the unsung heroes of our world."- S.H.*

*"We will be counting Second Chance Wildlife Center Staff and Volunteers when we count our Christmas Blessings! - D.D.*

*"I love Second Chance Wildlife Center. What you do is incredible and I hope this donation can help you to help more animals in need."- B.R.S.*

*"We love what you do for wildlife. Thank you for your hard work!" - L.Z.*

*"Thank you for all that you do for the precious wildlife that surrounds us."- K.B.*

*"Thank you for the invaluable service you provide." - J.P.*

*"You are all the greatest."- E.N.*

*"Thanx for all the hard work protecting animals and birds! We now know how really hard it is." - Anonymous*



# A NEW HOME FOR SECOND CHANCE



Artist's rendering of future clinic building



- **Under construction at: 26400 Haines Road in Clarksburg, MD. Expected completion: Late 2024**
- **Land was purchased in full for cash in 2018. No mortgage.**
- **SCWC currently rents a small, aging farmhouse from Montgomery County Park & Planning.**
- **\$4.9M+ project** with customized designs for rehabilitation: X-ray room, individual room climate controls and lighting for different species, more and larger outdoor enclosures. Main Clinic building increasing from 1,700sf today to 4,990sf at new facility, plus expanded outdoor enclosures.
- **All funds have been raised via PRIVATE sector. No Government Funds. No loans.** Active fundraising for this project is reflected in our Audited Financials as assets and cash. Those funds (excluding operational fund and reserves) will be depleted as construction continues toward completion in late 2024. The need for operational funds is ongoing.



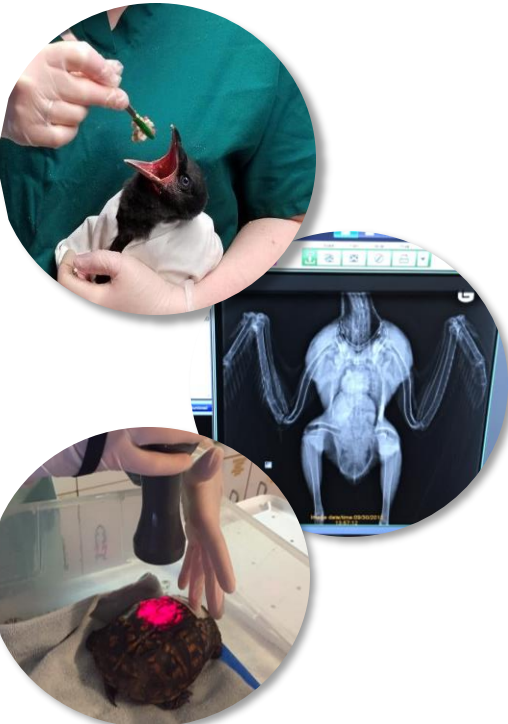
Current building. 100+ years old. Only 1,700 sf. Never intended for wildlife rehabilitation.





## ESSENTIAL OPERATIONAL EXPENSES:

- **Species-specific foods.** Live insects and fish, nuts, formulas, fresh fruits & vegetables.
- **Medications and Vitamins.** Antibiotics, anti-inflammatory and pain medications, hydration fluids, oxygen are used daily, and others are acquired and used as needed.
- **Operational Necessities:** Business Insurance, Utilities, Annual Permit fees, Computers & Printers, Cleaning supplies, Biohazard Waste Removal, Financial Services Fees, Payroll & payroll taxes, Patient Databases & Bookkeeping software, etc.
- **The Wildlife Rehab field has a high turnover rate due to the hours, traditionally low pay, and stress of the job. We have focused on attracting, training, and retaining high-quality Staff** via competitive wages, health insurance, continuing education & training, career growth opportunities, how we approach scheduling shifts, and more. This has resulted in greater retention and maximizing our investment in recruiting and training.
- **Medical Equipment & Supplies.** Repair or replacement of X-ray machine and accessories, cold laser therapy system, blood panel analysis kits, surgical lights, microscopes, incubators, refrigerators and freezers, and more. Bandages, splints, surgical tools, syringes and needles, feeding tubes. Surgical masks and gloves, etc.



*Whenever possible, SCWC seeks donated or discounted supplies, equipment and services. The need for fresh produce and "live" food items requires having cash resources on hand to purchase these essentials as needed.*

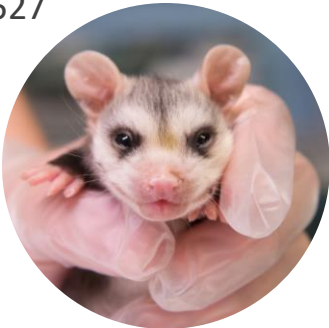
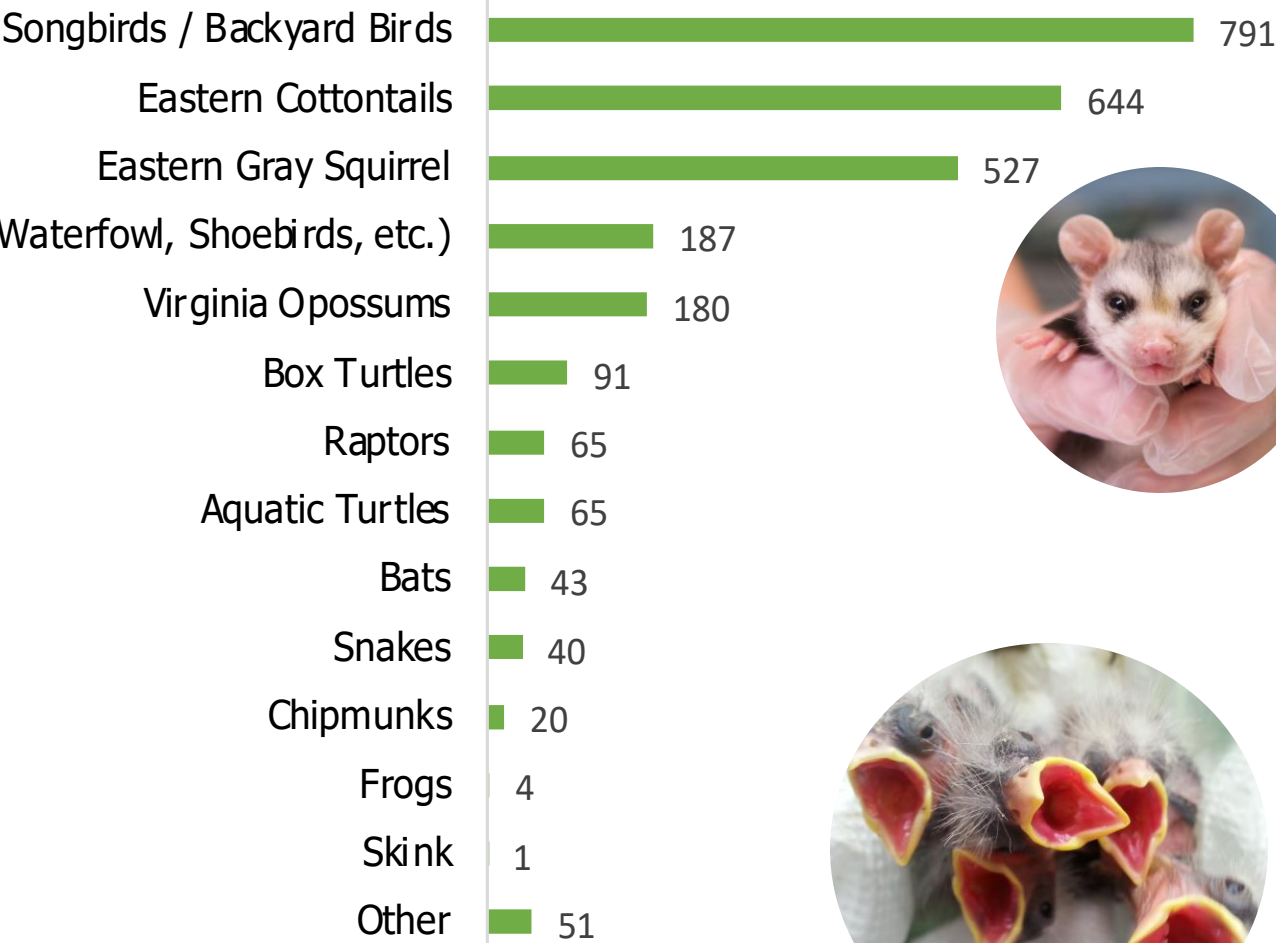
*The costs of these essentials continue to rise. With expanded capacity for patients at the new center, our expenses for these essentials will increase even more. Your support is critical to our ability to continue to provide life-saving resources.*





# 2023 PATIENT STATISTICS:

## ADMISSIONS



# 2023 PATIENT STATISTICS: REASON FOR ADMISSION

Pet Caught/Pet Attack 31.5%

Fell from Nest / Nest Destroyed 22.2%

Orphaned/Abandoned 18.7%

Struck by Car 10.4%

Impact/Window Strike 4.3%

Bird Unable to Fly 3.9%

Physical Trauma (unknown cause) 1.8%

Other or Undetermined 1.6%

Animal (non-pet) Attack 1.3%

Struck by Lawnmower/farm equipment 1.3%

Entangled (netting, fishing line, glue trap) 1.2%

Entrapment (pipe, structure, etc.) 1.0%

Shot 0.4%

Poison 0.2%

Struggling in Water/Drowning 0.1%





For example, many people don't realize that most of the bird species they see in their backyards require dramatically different nutrition and care. Some are seed eaters. Some eat insects and prefer food that wiggles. Some nest up high, some down low. Some are migratory and need to be rehabilitated and on their way before seasons change, etc. Differences abound in anatomy, resilience, diets, and more across the birds, mammals, reptiles, and amphibians that we treat. Rest assured, our team is well-educated and prepared for all.







# 2023 AUDITED FINANCIALS

(Fiscal Year Ending 12/31/23)

SCWC Leadership, including the Board Finance Committee, works diligently to protect its assets via investment diversification, monthly and annual financial reviews, frequent vendor evaluations, and business insurance policies. SCWC Financials are audited annually by an independent, licensed third-party accounting firm.

Active fundraising for this project is reflected in our Audited Financials as assets and cash. Those funds (excluding operational fund and reserves) will be depleted as new clinic construction continues toward completion in late 2024. The need for operational funds is ongoing.

## STATEMENT OF FINANCIAL POSITION

### ASSETS

Current Assets	351,052
Property & Equipment	1,913,712
Investments	<u>4,386,126</u>
Total Assets	6,650,890

### LIABILITIES & NET ASSETS

Current Liabilities	411,455
Unrestricted Net Assets	4,381,672
Temporarily Restricted Net Assets	<u>1,857,763</u>
Total Net Assets	<u>6,239,435</u>
Total Liabilities & Net Assets	6,650,890

## STATEMENT OF ACTIVITIES

Donations & Grants	895,286 *
In-kind Donations	10,940 **
Investment Income	164,448
County Animal Services Contracts	110,104
Product Sales - NET	-36
Net Assets Released from Restrictions	<u>0</u>
Total Income	1,180,742

\* Includes \$11,000 in restricted donations, primarily for the New Building Fund

\*\* In-kind donations consisted of legal & veterinary services

## SCHEDULE OF FUNCTIONAL EXPENSES

SCHEDULE OF FUNCTIONAL EXPENSES		
Program	570,667	79%
Management & General	75,892	11%
Fundraising	<u>75,845</u>	<u>10%</u>
TOTAL FUNCTIONAL EXPENSES	722,404	100%



# HOW YOU CAN HELP WILDLIFE BY SUPPORTING SECOND CHANCE

No two days are alike at Second Chance. And, fresh foods, clinic supplies, and medications can be very costly - plus, produce and some medicines spoil or expire over time and cannot be purchased in bulk. Financial contributions are always preferred as they provide us with the ability to quickly acquire specifically needed items regardless of which animals arrive at our door and what their specific needs are.

## Financial Contributions

Financial Contributions can be mailed to Second Chance Wildlife Center 7101 Barcellona Dr., Gaithersburg, MD 20879, or made via credit card on our website [www.SCWC.org](http://www.SCWC.org)

Ask your employer to include Second Chance Wildlife Center in its corporate matching or giving program, or to offer a grant to SCWC.

If participating in a United Way campaign, designate your gift to #8901. Use #65923 for CFC.

## Workplace Giving

Ask friends to donate to Second Chance instead of buying you a traditional gift for birthdays, weddings, graduations, etc. Many people suggest donations to SCWC in lieu of flowers for funerals.

## Donations Instead of Presents

On a daily basis we need cleaning products, postage stamps, office supplies, towels, black and white newspaper, and gift cards for groceries (Giant Foods) and gas (for driving animals to be released across the state). A list of the specific items we need is updated frequently on our website. Individuals can bring these items directly to our facility (please be sure to call us at 301-926-9453 in advance).

Local places of worship, scout troops and schools have been successful in hosting donation drives to provide SCWC with needed supplies. It's easy!

If you are more than 70.5 years old and have an IRA, speak with a tax or financial advisor to see if making a Qualified Charitable Distribution (QCD) can benefit you and Second Chance.

Include SCWC in your estate planning.

Contact us at [Info@SCWC.org](mailto:Info@SCWC.org) for more information on any of the items listed above.

## Estate Planning

## Host a Donation Drive

## Consider Making A QCD

# RETURNING HEALTHY ANIMALS BACK HOME TO THE WILD IS THE BEST PART OF OUR WORK



IRS #:  
52-1927600



For more information  
Email us :  
Info@scwc.org